



KANSAS GEOLOGICAL SOCIETY

BULLETIN

Volume 97 Number 2

March - April 2022

Established 1925

IN THIS ISSUE

KGS Library New Location Announcement

page 10-11

First Annual Larry Richardson Memorial Shooting Tournament

page 7



Your 1/8 page ad here

**Use Your KGS Library
For All Your Printing Needs**

Old photos?
Old documents?

We can scan them for you!

Robert F. Walters Digital Library

The most complete source for Kansas data

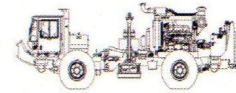
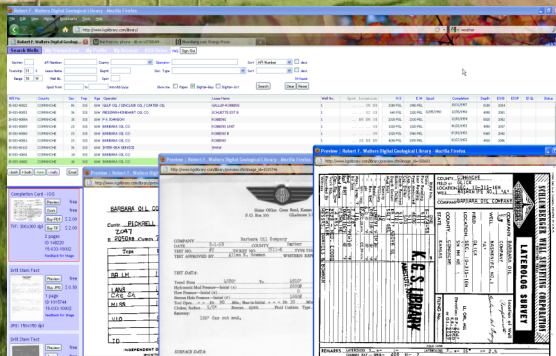
Database updated nightly

Day or Night

You can get to the data as you need it

www.kgslibrary.com

To Join: call 316-265-8676



*Proudly Celebrating 25+ Years
Acquiring Seismic Data Throughout the
Continental United States*

WICHITA

Nicolle Jausel
(316) 636-5552

Nicolle@parangongeo.com

DENVER

Kim Nordberg
(303) 888-8885

Knordberg@parangongeo.com

HOUSTON

Brent Propst
(832) 643-5158

Bpropst@parangongeo.com

OKLAHOMA CITY

Joe Broussard
(405) 213-9859

Jbroussard@parangongeo.com

website: www.parangongeo.com

We Invite You

To join the

***Kansas Geological
Foundation***

*\$50.00 membership is
tax deductible*

Call 316-265-8676

Or send checks to:

Kansas Geological Foundation

212 N. Market, Ste. 100

Wichita, KS 67202

Table of Contents

Features:	New KGS Building Announcement	page 10-11
KGS Events:	KGS Larry Richardson Memorial Shooting Tournament	page 7

Departments & Columns:

KGS Tech Talks	4
Advertiser's Directory	8
In Memoriam	14
Professional Directory	15
Kansas Geological Foundation Cornerstone and KGF News	19-21
Kansas Geological Foundation Memorials	22-24
Exploration Highlights	26-27

ON THE COVER:

**East and West Spanish Peaks
Huerfano County, Colorado
Famous for Igneous Dikes**

Picture by Wes Hansen

The Kansas Geological Society Bulletin, which is published bimonthly in electronic format, seeks short papers dealing with any aspect of Kansas geology, including petroleum geology, studies of producing oil or gas fields, and outcrop or conceptual studies. Maximum length of papers is 6 pages as they appear in the Bulletin, including text, references, figures and/or tables, and figure/table captions. Inquiries regarding manuscripts should be sent to manager@kgslibrary.com or mailed to 1704 S. Baehr, Wichita, KS 67209. Specific guidelines for manuscript submission appear in each issue of the Bulletin, which can also be accessed on-line at the Kansas Geological Society web site at <http://www.kgslibrary.com>

SOCIETY Technical Meetings

All Technical Meetings will be on Zoom

- March 9, 2022 Robert Davis, Schlumberger retired, *“Early Development of a Noval Formation Imaging Tool for Cased Hole Wells”*
- March 23, 2022 Dr. Camelia Knapp, OSU, *“Gas Hydrates in the Gulf of Mexico”*
- April 13, 2022 Dr. Heather Bedle, OU, *“Taking Seismic Geomorphology to the Next Level with Machine Learning”*
- April 27, 2022 Andrew Cullen, SVP retired, *“Early Cambrian Intra-Continental Rifting and the Evolution of the Southern Oklahoma Aulacogen: An Assessment of Our State of Ignorance”*
- May 11, 2022 Bill Fairhurst, Riverford Exploration, LLC
- May 25, 2022 Ken S. Johnson, OGS retired, *“Salt Karst in the Greater Permian Evaporite Basin of Texas, New Mexico, Oklahoma, Kansas and Colorado”*

Note: For those geologists who need 30 professional development hours (pdh) to renew their licenses, there will be a sign-in sheet at each presentation and also a certificate of attendance.

Please remember to check the website for the most up to date information on Technical Talks

<http://www.kgslibrary.com/techtalks.cfm>



KANSAS GEOLOGICAL SOCIETY



BOARD OF DIRECTORS

PRESIDENT

Roger Martin

SECRETARY

Sal Mazzullo

DIRECTORS

Brian Fisher
Seth Evenson
Doug Louis

PRESIDENT-ELECT

Preston Doll

TREASURER

Garet Dinkel

ADVISORS

Tyler Sanders
Kent Crisler
Kerry Parham

BULLETIN STAFF

EDITOR

Wes Hansen (316) 772-6188

ADVERTISING

Kent Scribner (316) 640-1154

MEMORIALS

Wesley Hansen (316) 772-6188

EXPLORATION HIGHLIGHTS

John H. Morrison, III
Independent O&G (316) 263-8281

STATE SURVEY

KS Geological Survey (785) 864-3965

SOCIETY NEWS

KGS Library (316) 265-8676

MANAGER

Rhonda Wisely (316) 265-8676

COMMITTEE CHAIRMEN

Advertising

Kent Scribner

Advisory

Annual Banquet

Doug Davis

Bulletin

Wesley Hansen

Computer Committee

Tyler Sanders

Continuing Education

Distinguished Awards

Wesley Hansen

Environmental

Kent Matson

Field Trip

Jerry Honas

Fishing Tournament

Future Plans

Tyler Sanders

Golf

Kevin Davis

New Building

Tyler Sanders

Historian

Larry Skelton

Library

Ted Jochems

Membership

Larry Friend

Nomenclature

John H. Morrison, III

Picnic

Beth Isern

Public Relations

Shooting Tournament

Brian Fisher

Technical Programs

Doug Davis

Technical Committee

Ryan Dixon

Finance Committee

Tim Hellman, Chairman

Members: Rocky Milford, Chuck Brewer, David Doyel, and Tom Funk

K.G.S. LIBRARY

PHONE 316-265-8676 FAX 316-265-1013

email: frontdesk@kgslibrary.com or

Web: www.kgslibrary.com

A.A.P.G. DELEGATES

Douglas Davis
2022

Wesley Hansen
2022

The KGS *Bulletin* is published bi-monthly by the Kansas Geological Society, with offices at 1704 S. Baehr, Wichita, Kansas 67209 Copyright 2022, The Kansas Geological Society. The purpose of the *Bulletin* is to keep members informed of the activities of the Society and to encourage the exchange and dissemination of technical information related to the Geological profession. Subscription to the *Bulletin* is by membership in the Kansas Geological Society. Limited permission is hereby given by the KGS to photocopy any material appearing in the KGS *BULLETIN* for the non-commercial purpose of scientific or educational advancement. The KGS, a scientific society, neither adopts nor supports positions of advocacy, we provide this and other forums for the presentation of diverse opinions and positions. Opinions presented in these publications do not reflect official positions of the Society.



Nine Trucks Serving

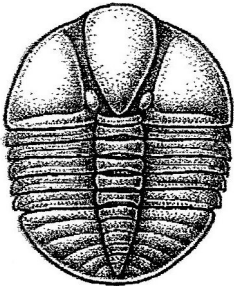
Kansas--Colorado--Texas--Nebraska--Illinois

DST's

Back Pressure testing (G1 7 G2)

Slick line services using the same Weatherford

Electronic Pressure Gauges used on DST's



1-800-728-5369

FAX 1-785-625-5620

www.trilobitetesting.com

trilobite@eaglecom.net

SHOPS LOCATED IN:

Hays, KS

Scott City, KS

Pratt, KS

Oberlin, KS

CAN YOU NAME THE CRITTER?

Sponsored by Trilobite Testing, Inc.

Is your paleo up to date?

If you know the name of the trilobite,
submit your guess via e-mail to
manager@kgslibrary.com

Remember that *Trilobite Testing* is
sponsoring your efforts, so be sure to thank
Paul Simpson the next time you see him.

**Bulletin committee members and PhD's in
Paleontology are prohibited from entering.**



Kansas Geological Society (KGS) Medallion for Scientific Distinction and Excellence

The Kansas Geological Society (KGS) Medallion for Scientific Distinction and Excellence may be given annually for peer-recognized, sustained significant scientific contributions to all facets of applied Kansas geology, including work either in Kansas or in surrounding states if the latter contributions pertain directly and significantly to Kansas geology. No more than one award may be given each year, an award does not have to be given every year, and members of the KGS Awards Committee that handle nominations for this award cannot nominate themselves for this award. The candidates need not be active KGS members, and they must be living at the time of selection. The primary consideration in the selection of a candidate shall be his or her sustained, published, significant contributions to any facet of Kansas geology. Contributions may be varied in form such as development of geologic concepts, advancement in discovery thinking, and recognized leadership in exploration concepts. Oral and/or written publications in peer-reviewed geological venues is a requisite criterion for any candidate for this award. The name of a candidate shall be presented by the Awards Committee to the KGS Board of Directors for their approval. Once approved, the recipient shall be presented an appropriate award in the form of a medallion or plaque recommended by the Awards Committee and approved by the Board of Directors at the annual business meeting of the society. This is a new award given by the KGS for distinction and achievement in Geological research in Kansas.

Awards Committee members are Sal Mazzullo, Mike Dealy and Alfred James.

ATTENTION KGS MEMBERS!!!!

TEST YOUR SHOTGUN SHOOTING SKILLS IN THE: Larry Richardson Memorial Spring KGS SHOOTING TOURNAMENT

**for
FUN and PRIZES**

Saturday, May 7th, 2022
8:30am Registration event starts at 9:15 am.

Shady Creek Sporting Clays Range
1252 N Oliver Rd., Belle Plaine, KS

100 shot Sporting Clays

BBQ Lunch will be provided

As the cost of ammunition has increased, we are unable to provide shells as we have done in the past and still keep our entry fee low. All profits will go towards a suitable KGS memorial for Larry Richardson. Also to help the charities that Larry supported - Please consider bringing cans of food for donations to a local Food Bank and/ or Baby items to help needy women. Please Pay and preregister by May 6, 1:00 pm for planning purposes.

Prizes awarded to top three overall in each of three flights. The breaks between flights will be determined after the match is over. Also if donations allow - Drawings for door prizes will also be held after the match. Entrants may include KGS members, supporter and friends of Larry.

RULES

1. Eye and ear protection required.
2. Bring your own shells. They will be may be available to purchase onsite. (Only 7½, or smaller shot sizes are permitted.)
3. Shooters must provide own gun.
4. No pistol or rifle shooting permitted
5. No alcoholic beverages may be consumed prior to or during any shooting.

ENTRY FORM

NAME _____ COMPANY _____

ADDRESS _____ CITY _____ STATE _____ ZIP _____

SHOTGUN GAUGE _____

INCLUDE \$65.00 ENTRY FEE WITH ENTRY FORM.

Return all entries to the KGS Library 212 N. Market, Wichita, Kansas 67202

For further information Call Brian Fisher at 316-519-4554, Preston Doll 620-218-3076, Boyd Whittaker 316-250-2747

AAPG ACE and Section Meeting

Updates For 2022

2022 Image August 28-September 2, 2022

Houston, TX

Mid-Continent Biennial Field Conference

Postponed until Fall of 2022 Rolla, MO

ADVERTISER'S DIRECTORY

	<i>page</i>
Duke Drilling	25
Kansas Geological Foundation	18
Murfin Drilling Company, Inc	25
PARAGON Geophysical Services, Inc	2
Professional Directory	15
Trilobite Testing	6
Walters Digital Library	2

Log in to

Walters Digital Library At

www.kgslibrary.com

Log in as our guest

and see the Society's Database

A convenient way to see what you might want to order!

Call or email your order to:

316-265-8676

frontdesk@kgslibrary.com

ADVERTISER'S RATES: 2022

Full Page	B&W	Color
6 issues	\$2,000	\$2,500
3 issues	\$1,080	\$1,325
1 issue	\$480	\$525
1/2 Page		
6 issues	\$1,000	\$1,500
3 issues	\$540	\$825
1 issue	\$225	\$350
1/4 Page		
6 issues	\$600	\$900
3 issues	\$325	\$525
1 issue	\$150	\$250
1/8 Page		
6 issues	\$300	\$500
3 issues	\$175	\$325
1 issue	\$75	\$185
Professional Ad (Business Card)		
6 issues	\$90	\$180

**Get Your Maps copied at the KGS library
We can scan, copy, and print up to 44" wide**

Color or Black & White

Solid Color @ \$4.00/sq. ft.

Line maps with color @ \$3.00/sq. ft.

Robert F. Walters Digital Library

Log in as our Guest

username: guest

password: guest

316-265-8676



**Let Us Print Your Geo Reports
And Save Your Time For Finding More Oil & Gas**

Top Quality Color Printing For Our Membership

Email your files to: kgsorders@gmail.com

The Kansas Geological Society & Library

KGS Library New Location Update

Dear Kansas Geological Society Members:

The Kansas Geological Society Library has moved from the 212 N. Market Landmark Square Building to our new location at 1704 S. Baehr. The library was located in the Landmark Square building for 50+ years, eventually occupying approximately 12,000 square feet on the first floor and basement. The new building is larger with 14,780 square feet.

A short history of the new building acquisition and move:

The building at 1704 S. Baehr was first noticed in November 2019 as a nearly perfect office / warehouse building for the KGS. Before action could be taken however, the building sold. Following that, for the next two years, approximately 60 buildings were evaluated from November 2019 to March of 2021. They included buildings for sale as well as lease. All were researched for suitability. Most were toured, many by the full committee. Some of the tours included board members. Of all these properties, several were carefully inspected and taken under serious consideration. We made offers on a few during that time. None were as well suited as the initial Baehr property. To our surprise, in March 2021, the Baehr property became available again. We quickly made an offer and it was accepted.

The Society closed on the property January 31, 2022. Although this was after the Society's Landmark Square lease expired at the end of 2021, a negotiated extension of three months, expiring on March 31, 2022, allowed us time to move.

The task of moving 50 years of accumulated data, over 500 file cabinets, dozens and dozens of pieces of furniture, hundreds of books and publications, printers and plotters, a computer network and workstations, and hundreds of miscellaneous items was a daunting one. It seemed impossible initially in the only two months remaining time.

Over the years, given the yearly changing volunteer boards of directors, a large amount of the library's material became totally disorganized with large collections of documents buried deep in the dark corners of the first floor and basement of Landmark Square. This material was unearthed during the move.

THE GOOD NEWS: The move was successful! It was essentially finished on March 21st, 2022, ten days before the expiration of our lease.

I am very proud that this enormous effort was successful. It could not have been done without a mammoth effort by a fantastic group of volunteers. We all understood and were highly motivated knowing the incredible value of all these documents collected over the last *100 years*, not only regarding Kansas petroleum geology, but for every other aspect of Kansas geology.

I plan to publish a photo record of this epic move in the near future. It will amaze you.

I wish to thank the move committee volunteers who are deserving of ALL Society member's thanks:

THE 'A' TEAM:

*** **Kerry Parham***** - He deserves special recognition for his tireless and incredibly thorough inspection work, insight, and details on needed repairs on buildings, not only on the Baehr property, but many of the other 60 properties reviewed in the last two years. We are so fortunate to have Kerry as a member of the Society with his long experience not only as a geologist, but also as a home inspector and general contractor.

The other tireless workers on the "A" team included:

Larry Friend, Doug Davis, Kent Crisler, Dallas Donner, Jerry Honas, Dave Barker, Ted Jochems

Other Volunteers who pitched in:

Brian Fisher, Ken Dean, Tom Dudgeon, Garet Dinkel, Preston Doll, Brad Rine, Rod Anderson

In addition, I personally want to thank the Society Board of Directors for their faith in me for heading this successful project. There is still a lot of unpacking and organizing yet to do.

Please keep in mind for your research and prospecting, there are millions of documents now available that previously were buried in the basement and first floor Landmark Square. They are now, *for the first time*, seeing the light of day. Much of this buried material was not available at the time during the initial scanning for the Walters Digital Library, so are not available, at least at the present time, for viewing and downloading in the Walters Digital Library.

It is a fact that many of our members have made successful careers by digging deep into well records and documents and found that ONE small "nugget" of information.

We always and continue to need volunteer help sorting and organizing this mountain of new information. Your help would be greatly appreciated.

Respectfully submitted,

Tyler H. Sanders

04/04/2022 KGS Future Plans Committee Chairman, Advisor to the Board of Directors, Computer Committee Chairman, Building and Move Committee Chairman.

First Observed Geologist at the New KGS Building

Here is the first seen occupant of one of the four booths setup in our new building on S. Baehr. He was seen only days after the move was completed. It was the honorable, inexorable Don Beauchamp checking out geology and production history on a lease using the newly unearthed information in our new building.

Once word gets out of the huge collections of well data that was, up to now, buried and inaccessible in the basement and remote back areas of Landmark Square, visitor traffic will undoubtedly increase. Access to this new data needs to be advertised to the KGS membership.

Much of this data was unknown to exist previously when initial document scanning was done in the early days of the Walter Digital Library. A significant amount was donated or gifted to the library after the initial scanning was finished.

On another important note, Dean Seeber, who has amassed, during his lifetime, without a doubt, the most valuable and complete collection of eastern Kansas well data, was given a tour of the new building last Friday April 8th. He was shown the area designed to house his collection in the new building. He was very impressed and pleased. He is moving forward with his donation plans.

The collection is likely the most valuable collection the KGS has received in at least the last 50 years... if not since 1925. If advertised as such, the collection could substantially increase membership in the paper library, as well as the digital library once scanned. I, and Deborah FitzGerald who accompanied me on the tour representing the Foundation, promised to reserve space to provide working access to the hard copy file cabinets, as he desired, as a "Special Collection" at least until the material is scanned and made available on the Walters Digital library.

Tyler H. Sanders, 2022 KGS future plans committee chairman, Move committee Chairman, Advisor to the board, Computer committee chairman

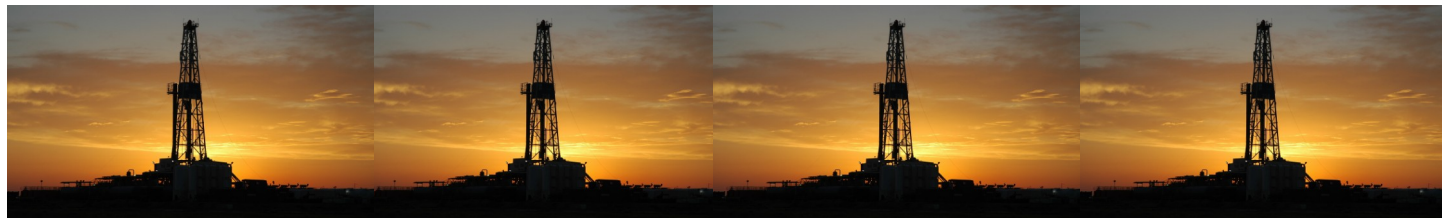


Volunteers Still Needed

If you are a KGS member with some time on your hands, then there is still much work to be done over the next several months at our new building.

Please contact the KGS if you have time to work.

Tyler Sanders remains in charge of the move so wait on direction from him on what and when to help.



In Memoriam

KGS and Industry Members Lost in 2021 and 2022

2021

Lee Banks

Richard “Dick” Smith

Timothy J. Lauer

Walter Innes Phillips

George N. Mueller

Jack W. Gabbert

Fred Stump

Larry J. Richardson

James R. Daniels

A. Scott Ritchie

James “Jim” Iniguez

2022

Lee Poulsen

Bill Ham

Pat Kane

Attention:

The KGF has several empty completion card cabinets for sale.

The price is \$50/cabinet with buyer responsible for pick up.

Also, many empty file cabinets and desks etc. are available as well.

Please contact Ted Jochems or Tyler Sanders through

the KGS at 316-265-8676

PROFESSIONAL DIRECTORY

Kirk Rundle
Consulting Geophysicist

3D Seismic Design, Acquisition to Processing QC.,
Interpretation and Analysis, Subsurface Integration
7340 W. 21st. N., Ste. 100
Wichita, Kansas 67205

Office: 316-721-1421 Fax: 316-721-1843
Email: kirk@rundlegeo.com

ROGER L. MARTIN
Independent Petroleum Geologist

200 E 1st St, Ste 405, Wichita, KS 67202

Cell: 316-833-2722 Office: 316-250-6970
KS Field Cell: 316-655-1227

Email: rogermartingeo@yahoo.com

Covey - The Well Watchers

“One Thousand Wells and Counting”

Curtis E. Covey Wellsite Petroleum Geologist

Gas Trailer Cell: 316-217-4679 Office: 316-776-0367

Email: wellsitgeol@gmail.com

6548 Bedford Circle Derby, Kansas 67037

Gas Detection Trailer & Internet/Phone Communications



ELI J. FELTS
CONSULTING PETROLEUM GEOLOGIST

316.204.5059 EJJELTS47@GMAIL.COM

- VERTICAL & HORIZONTAL WELL-SITE SUPERVISION
- PROSPECT GENERATION & EVALUATION
- WELL-LOG ANALYSIS
- DIGITAL MAPPING SERVICES & GEOLOGICAL REPORTS
- KCC & COMPLIANCE SPECIALIST
- PROFESSIONALLY INSURED

COMPETITIVE PRICING & STATE OF THE ART SERVICES YOU CAN COUNT ON
CALL TODAY & RECEIVE (1) FREE DAY WELL-SITE TO NEW CLIENTS

Your business card ad

Could be right here

For only \$90/year

M. ((Brad))ford Rine, Geologist

Licensed, Registered, Certified

PROSPECT EVALUATION	PROSPECT ORIENTATION
WELLSITE SUPERVISION	DRLG/COMPL CONSULTATION
RESERVOIR STUDIES	PROPERTY EVALUATION
EXPERT TESTIMONY	BANJO PICKER
100 South Main Suite #415 Wichita, Kansas 67202	Email: rinemb@sbcglobal.net Office & Cell: (316) 250-5941

WESLEY D. HANSEN

Consulting Geologist

Well site Supervision • Geologic Studies

212 N. Market, Ste 257

Wichita, Kansas 67202

Office/Mobile: (316) 772-6188

whansen4651@sbcglobal.net

40 Continuous Years in the Oil Patch

Your business card ad

Could be right here

For only \$90/year

IOGSI INDEPENDENT
OIL & GAS SERVICE, INC.
Digital Well Data You Can Trust

JOHN H. MORRISON, III
President

www.IOGsi.com Phone: 316-263-8281
3909 N. Sweet Bay St. Fax: 316-263-0874
Wichita, Kansas 67226-3501 Email: jmorrison@iogsi.com

MELLAND ENGINEERING, INC.

Petroleum Engineering & Geological Consulting

James E. Melland, P.E., P.G.

President

Office: (620) 241-4621 Fax: (620) 241-2621

jamesm@mellandengineering.com

www.mellandengineering.com

P.O. Box 841, McPherson, KS 67460-0841

Your business card ad

Could be right here

For only \$90/year

Your business card ad

Could be right here

For only \$90/year

*The KGS Library is pleased to
announce a new service*

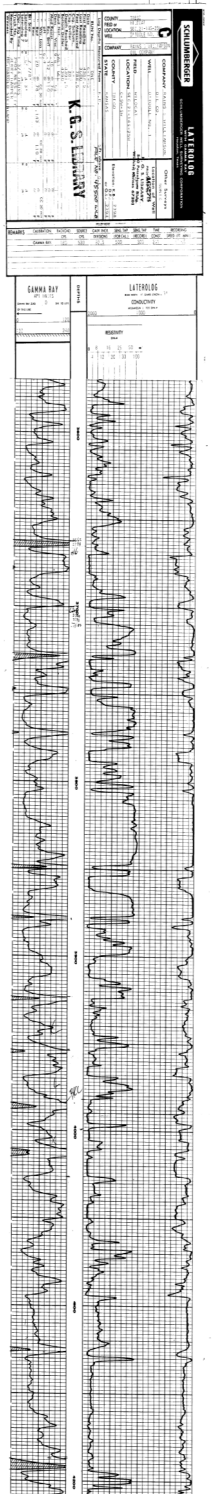
Creating
LAS files
from our logs
or yours

**\$20.00 per
curve!!**

**Quick
turn-around**

Send us your log file
or tell us which of
ours you would like
converted.

316-265-8676



Announcing ROCKFEST 2022

At one time we were not sure if we would hold the event with the construction of the new Energy Education Center on the grounds, but educating and exciting kids about geology and oil is one of our important missions, so we are charging ahead on Saturday, April 30th, 9:00 and -12:00 noon.

We will have the Geode Table again if someone has time to “man” it and we are VERY open for new ideas.

Also, we are working on updating the Large Exhibit Hall exhibits and adding new exhibits in the Energy Education Center. Would you be willing to serve on our Exhibit Educational Committee please? I need knowledgeable industry representatives like you to make sure the exhibits are accurate and tell the true and vital story of geology’s history, impact & future.

These are 2 separate asks. We can discuss the new projects more if you are able to be here on April 30th.

Thank you again for your consideration. It will be wonderful to see you again!

Tiya Tonn

Executive Director

Butler County Historical Society

Kansas Oil Museum

Cell: 316-648-2556

Museum: 316-321-9333

Editor’s Note:

Betty and I manned the geode table last time. If work doesn’t interfere, I will do it again. We both found the exhibits interesting. Bring your spouse and kids or grandkids to the Oil Museum on April 30 from 9:00-12:00. Last time a food truck was there with great bar-b-que. ***Please take note about Tiya Tonn’s desire to have knowledgeable industry professionals to help with the accuracy of exhibits as well as telling the story of geology’s history and future.***

A shout out to Kansas Oil and Gas Industry

Service Companies

Oil prices are recovering nicely with WTI over \$100 per barrel and Kansas posted price over \$90 per barrel

Now is the time to resume advertising in the KGS Bulletin

Let our several hundred members know that your company is still active and ready to work.

Your half page ad would look great here.

Color or blank and white

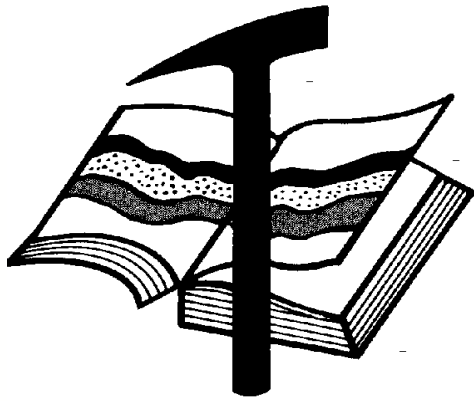
Contact Kent Scribner at 316-640-1154

KGS members please check your files

Fellow KGS members, please remember to check your files of elogs and geologist reports against the KGS paper library and the WDL before discarding them. I was contacted by John Morrison recently about a well I watched years ago that had some tops and DST info missing from his completion card. I took pics from my geo report of tops and DST results and sent them to John to update his card data. If I was to go through all of my files, I'm sure I have many logs and geo reports that are not in the files of either the KGS paper or the WDL. Before I hang things up in my career, I vow to go through all of my data and get it donated and scanned.

KCC rules allow an operator to hold information confidential for a two year period. As long as the well in question is older than the two year period, one can release the data. If one has concerns about alienating a client, of course, feel free to ask for permission.

Wes Hansen



Kansas Geological Foundation

Web Site: www.kgfoundation.org

**212 North Market
Wichita, Kansas 67202**

A not-for-profit educational and scientific corporation

GOALS:

- promote geology and earth science
- preserve geological records
- establish memorials and endowments
- support field trips and seminars
- financial aid and grants to students

PLEASE HELP SUPPORT THE FOUNDATION

Kansas Geological Foundation Services

The Kansas Geological Foundation provides the following services as a part of the organization's commitment to educate the public regarding earth science.

Speaker's Bureau

A list of speakers available to talk about various aspects of geology may be obtained by contacting Wes Hansen at the KGS Library, 265-8676. This service is free to the public.

DVD/Videotape Library

The KGF maintains a DVD & videotape library focused primarily on the various fields of earth science. These tapes may be checked out without charge by the public. To obtain a list of tapes, please contact the KGS Library, 212 N. Market, Ste. 100, Wichita, KS 67202, or call Wes Hansen at 265-8676.

The Kansas Geological Foundation was founded in March, 1989 as a not-for-profit corporation under the guidelines of section 501(c)(3) of the tax code to provide individuals and corporations the opportunity to further the science of geology. It is dedicated to providing charitable, scientific, literary and educational opportunities in the field of geology for the professional geologist as well as the general public.

KGF can receive in-kind donations through which the donor may receive a tax deduction. Of equal importance, the KGF provides the financial resources to sort, process and file this data at the KGS library. If you have a donation to make, please contact the KGF at 265-8676.

Your tax-deductible membership donation helps to defray the cost of processing donations and to support public education programs about the science of geology. Annual membership begins at \$50.00 per year. Donations of \$100.00 or more are encouraged through the following clubs:

Century Club	\$ 100 to \$ 499
\$500 Club	\$ 500 to \$ 999
Millennium Club	\$1000 to \$5000
President's Club	\$5000 and over

Kansas Geological Foundation

Kansas Geological Foundation News

Spring 2022 KGF Scholarship Recipients

Name	University	Scholarship	Amount
Hannah Proffitt	University of Kansas	KGF Scholarship - (Knighton Family Scholarship)	\$1000
Greg Seitter	University of Kansas	KGF Scholarship	\$500
Brady Tumblin	University of Kansas	KGF Scholarship	\$500
Daniel Mongovin	University of Kansas	KGF Scholarship	\$500
Isaac Allred	University of Kansas	KGF Scholarship	\$500
Shawn Dunaway	University of Kansas	KGF Scholarship	\$500
Oluwaseun Akomolafe	Kansas State University	KGF Scholarship	\$500
Tolulope Agbaje	Kansas State University	KGF Scholarship	\$500

KGF Grants

\$1000 to Vidhesh Shukla

Graduate Student from Kansas State University



Kansas Geological Foundation News

Students: The KGF awards scholarships each December and May. Check with your department chairs for applications. You must submit complete applications by the deadline.

Scholarship Applications for the Spring semester will be due by December 1, 2021.

Grants to help with research on Kansas related geology are also considered for aid.

If you are in the KGS Library and see Ted Jochems or any of the integrators, give any of them a great big thanks for their efforts in continuing the tedious process of examining, scanning and integrating new logs and geologist's reports etc. into our library and the WDL.

KGF Officers and Board Members

Executive Director **Kerry Parham**
President - **Rusty Mourning**
Vice President - **Will Darrah**
Treasurer - **Mark Thompson**
Secretary - **Debra D. FitzGerald**

Board Members

Ryan Dixon **Brad Rine**
Dennis Hedke **Mark Galyon**
Tim Hellman

Scholarships - Maurice Korphage
Publicity - Wes Hansen

The Kansas Geological Foundation Needs You!



By permission

The KGF provides the financial resources to sort, process and file, in-kind donations of geological data at the KGS library. Due in large part to the KGF this unique and rare well of information is being made available to all. Please consider telling your company management and colleagues about the benefits of a library that continues expanding in part because of the KGF.

We very much value and need your financial support.

Integration Update as of May 31, 2021

From January 1 through June 30, 2021, a total of 19,323 documents were examined by the integrators. A total of 3300 new documents were added to the WDL along with 1992 rescanned documents to replace poor images. This represents a 17.08% increase to the WDL.

PLEASE SUPPORT THE INTEGRATION PROJECT BY DONATING FINANCIALLY TO THE KANSAS GEOLOGICAL FOUNDATION

Submitted by Ted Jochems

Thank you to the Current KGF Members

The Kansas Geological Foundation gratefully acknowledges the generous contributions from the following Individual and Corporate Donors during our year end 2021 fundraising. From the Basic Membership up through the Millennium Class Members, we are deeply appreciative of your generosity in one of the most challenging times in our history. We wish you every success in the years and decades ahead.

Millennium Club

Steve Frankamp

Richard Jordan

Murfin Drilling Company, Inc.

500 Club

Don Beauchamp
Paragon Geophysical Services, Inc.
John O. Farmer, Inc.
Gore Oil Company
Hedke Geoscience Consulting, LLC
Derry Larson

Roger McCoy
Herman L. Loeb LLC
K & N Petroleum, Inc.
Bob O'Dell
Tom Pronold
Larry Richardson

Kirk Rundle Consulting, LLC
William H. Shepherd
Northern Lights Oil Company
Shakespeare Oil Company, Inc
Berexco, LLC

Century Club

C.W. Todd Aikins III
Val Energy, Inc.
Tomco Oil, Inc.
Holly Burke
Dave Callewaert
Scott Corsair
Marshall Crouch III
James Daniels
Jene C. Darmstetter
Red Oak Energy, Inc
Dixon Operating Co., LLC
David Doyel

W. Bryce Bidleman
Debra FitzGerald
Larry Friend
Wes Hansen
Alfred James III
George R. Jones
Kenneth M. LeBlanc
Chellie Mazzullo
RJM Company
Terra Firma Exploration
Bill Petersen

Sunrise Oilfield Supply, LLC
M. Brad Rine
A. Scott Ritchie
Michel Runnion
Richard J. Saenger
Mark Shreve
Trilobite Testing, Inc.
Richard D. Smith†
Chris Steincamp
Fred Stump
Darrel G. Walters

Basic Membership

Phil Askey
Briscoe Petroleum LLC
Raul Brito
Dean Britting
William E. Chew
Kent Crisler
Alan DeGood
Martin Dubois
Sarlan Resources Inc.
Doug Frickey
Harvey Gough
Tim Hellman

F. Judson Hipps
Jerry Honas
Ronald L. Irion
Ted Jochems
Mike Kidwell
Steve Kirkwood
M.L. Korphage
Larson Engineering, Inc.
William C. Manthey III
Mikeal Maune
Sal Mazzullo
Jon F. Messenger

Rusty Mourning
Quincy Ridge Petroleum, Inc.
Troy Phillips
John Rose
Bob Schreiber
Stewart Producers, Inc.
Robert Stolzle
Mark Thompson
John Washburn
Midco Exploration
JRZ Enterprises, LLC
Brian Fisher

Kansas Geological Foundation Memorials

KGS Member	Date Deceased	Memorial Established
Dan Bowles	09/89	1990
John Brewer	10/89	1990
George Bruce	08/89	1990
Robert Gebhart	01/90	1990
Ray Anderson, Jr.	11/90	1990
Harold McNeil	03/91	1991
Millard W. Smith	08/91	1991
Clinton Engstrand	09/91	1991
M.F. "Ted" Bear	10/91	1991
James & Kathryn Gould	11/91	1991
E. Gail Carpenter	06/91	1993
Benton Brooks	09/92	1992
Robert C. Armstrong	01/93	1993
Nancy Lorenz	02/93	1993
Norman R. Stewart	07/93	1993
Robert W. Watchous	12/93	1993
J. George Klein	07/94	1994
Harold C.J. Terhune	01/95	1995
Carl Todd	01/95	1995
Don R. Pate	03/95	1995
R. James Gear	05/95	1995
Vernon Hess	06/95	1995
E. K. Edmiston	06/95	1995
Jack Rine	07/95	1995
Lee Cornell	08/95	1995
John Graves	10/95	1995
Wilson Rains	10/95	1995
Heber Beardmore, Jr.	09/96	1996
Elmer "Lucky" Opfer	12/96	1996
Raymond M. Goodin	01/97	1997
Donald F. Moore	10/92	1997
Gerald J. Kathol	03/97	1997
James D. Davies	08/88	1997
R. Kenneth Smith	04/97	1997
Robert L. Dilts	05/97	1997
Delmer L. Powers	06/72	1997
Gene Falkowski	11/97	1997
Arthur (Bill) Jacques	01/98	1998
Bus Woods	01/98	1998
Frank M. Brooks	03/98	1998
Robert F. Walters	04/98	1998
Stephen Powell	04/98	1998
Deane Jirrels	05/98	1998
William G. Iversen	07/98	1998
Ann E. Watchous	08/98	1998
W.R. "Bill" Murfin	09/98	1998
Donald L. Hellar	11/98	1998
Joseph E. Rakaskas	01/99	1999
Charles W. Steincamp	02/99	1999
Robert and Betty Glover	10/96	1998
Howard E. Schwerdtfeger	11/98	1999
W. W. "Brick" Wakefield	03/99	1999
V. Richard Hoover	01/00	2000
Warren E. Tomlinson	01/00	2000
James A. Morris	01/00	2000
Eric H. Jager	03/00	2000
Kenneth W. Johnson	03/00	2000

Kansas Geological Foundation Memorials

KGS Member	Date Deceased	Memorial Established
Dean C. Schaaake	03/00	2000
Fred S. Lillibridge	05/00	2000
Jerry A. Langrehr	07/00	2000
Clark A. Roach	07/00	2000
Floyd W. "Bud" Mallonee	10/00	2000
Ralph W. Ruuwe	09/00	2000
Robert L. Slamal	02/01	2001
Jerold E. Jespersen	06/01	2001
William A. Sladek	06/01	2001
Harlan B. Dixon	06/01	2001
Edward B. Donnelly	08/01	2001
Richard P. Nixon	02/02	2002
Robert W. Frensley	12/01	2002
Gerald W. Zorger	01/02	2002
Don L. Calvin	03/02	2002
Claud Sheats	02/02	2002
Merle Britting	2002	2002
Harold Trapp	11/02	2002
Donald M. Brown	11/02	2003
Elwyn Nagel	03/03	2003
Robert Noll	09/03	2003
Benny Singleton	09/03	2003
Jay Dirks	2003	2003
J. Mark Richardson	02/04	2004
John "Jack" Barwick	02/01	2004
Richard Roby	03/04	2004
Ruth Bell Steinberg	2004	2004
Gordon Keen	03/04	2004
Lloyd Tarrant	05/04	2004
Robert J. "Rob" Dietterich	08/96	2004
Mervyn Mace	12/04	2004
Donald Hoy Smith	04/05	2005
Richard M. Foley	06/05	2005
Wayne Brinegar	06/05	2005
Charles B. Moore	09/96	2005
Jack Heathman	05/06	2006
Charles Kaiser	09/06	2006
Rod Sweetman	08/06	2006
Karl Becker	10/06	2006
Frank Hamlin	10/06	2006
Marvin Douglas	12/06	2006
Robert W. Hammond	04/07	2007
Eldon Frazey	04/07	2007
Pete Amstutz	05/07	2007
Charles Spradlin	05/07	2007
Donald R. "Bob" Douglass	09/07	2007
Vincent Hiebsch	11/07	2007
Glen C. Thrasher	03/08	2008
Peg Walters	06/08	2008
Theodore "Ted" Sandberg	07/08	2008
James Ralstin	11/08	2008
Earl Brandt	04/09	2009
Walter DeLozier	05/09	2009
Don D. Strong	1/10	2010
John Stone	02/10	2010
Craig Caulk	03/10	2010
Joseph E. Moreland, Jr.	03/10	2010

Kansas Geological Foundation Memorials

KGS Member	Date Deceased	Memorial Established
Gene Garmon	03/10	2010
James F. Dilts	05/10	2010
Jerry Pike	05/10	2010
Donald Hollar	06/10	2010
Delbert Costa	08/10	2010
John Tanner	08/10	2010
William (Bill) Owen	09/10	2010
Harold (Hal) Brown	10/10	2010
Edmund G. Lorenz	11/10	2010
Thomas E. Black	05/11	2011
Wayne E. Walcher	07/11	2011
Henry F. Filson	07/11	2011
Thomas Ray	07/11	2011
Edgar E. Smith	09/11	2012
Marilyn Messinger	06/13	2013
Micheal Mitchell	09/13	2013
Orvie Howell	11/13	2013
James Thompson	11/13	2013
Dick Rowland	09/13	2014
Robbie Thompson	12/13	2014
Kris Kennedy	04/14	2015
Annette Hedke	02/15	2015
James Devlin	04/15	2015
Robert Gensch	09/15	2015
Jerald Rains	05/16	2016
Max Houston	05/16	2016
Robert "Gus" Messinger	01/17	2017
Jimmy Wayne Gowens	04/17	2017
Walter H. Martz Jr.	01/18	2018
Gary Sandlin	01/17	2018
Douglas McGinness	12/16	2018
Allen Siemens	06/18	2018
Ernest R. "Ernie" Morrison	09/18	2018
E. G. "Elbie" McNeil	12/18	2018
Robert Maxwell (Bob) Euwer	1/19	2019
J. Fred Hambright	12/18	2019
W. Lynn Watney	7/19	2019
Byron Hummon	12/18	2019
Mike Raymond	11/19	2019
James Roberts, Jr.	3/19	2019
Herb Johnson	8/19	2020
Lloyd Parrish	2/20	2020
Bruce Reed	5/20	2020
Bob Scull	6/20	2020
Thornton E. Anderson	7/20	2020
Don Shawver	12/16	2020
Phillip Hart	12/20	2021
Timothy Lauer	05/21	2021
Fredrick Stump	09/21	2021
Larry J. Richardson	10/21	2021



18 Drilling Rigs
To depth of 9,500 ft.



WESTERN KANSAS
SOUTHERN NEBRASKA
EASTERN COLORADO
OKLAHOMA PANHANDLE

For contract information contact:

William Murfin
Drilling Manager

316-258-8888 (Direct)
316-267-3241 (Main)

250 N. Water, Ste. 300
Wichita, KS 67202

DUKE
DRILLING COMPANY

ROTARY DRILLING CONTRACTOR

620 Hubbard PO Box 823
Great Bend, KS 67530

100 S. Main, Ste. 410,
Wichita, KS 67202

Your Company

BULLETIN CONTENT POLICY

Effective January 1, 2018, only ads for service companies and geologists offering their services will be permitted in the KGS Bulletin. Furthermore, only content of geologic interest or official KGS functions (technical talks, annual banquet, golf tourney, picnic etc.) will be permitted in this bulletin. This policy is in keeping with maintaining a professional standard for this publication. Any interpretation of this policy rests solely with the editor of this bulletin.



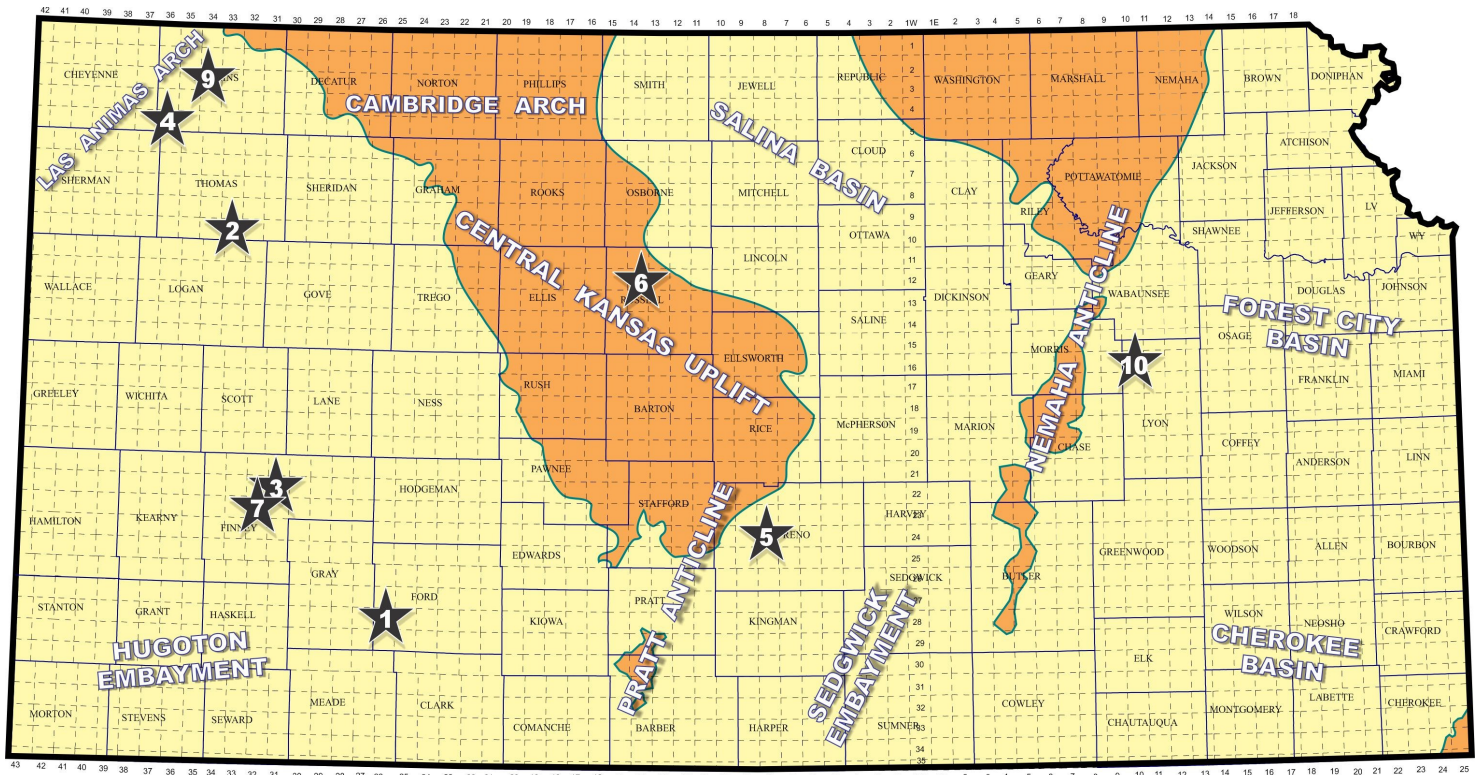
AAPG Needs You!

Professional geoscientists, share your world!

The Mid Continent Section has **17 AAPG Student Chapters**, but only **3 Visiting Geoscientists**...which makes it almost impossible to have a professional geoscientist visit to each school at least once a year or even once every two years. The aim of AAPG's program is to give students a flavor of a professional life in energy resources. It also hopes to encourage dialog between industry and academia. To be a Visiting Geoscientist bearing the AAPG flag, you are asked to have at least 5 years of experience and make at least one visit per year to a university. It can be a school with an AAPG Student Chapter, or a college/university without one. Your choice.

The Mid Continent schools with Student Chapters are: Missouri University, Fort Hays State University, Iowa State University, Kansas State University, Missouri State University, University of Nebraska, Northwest Missouri State University, Oklahoma State University, University of Oklahoma, University of Arkansas, University of Iowa, University of Kansas, University of Missouri, Columbia University of Tulsa and Wichita State University.

Contact Robbie Gries, co-Chair VGP committee, Denver, if you are interested in learning more. rrgries@aol.com



Map courtesy of Marc Summerville

1. Carmen Schmitt, Inc., Great Bend, KS, has discovered Mississippian oil reserves at a remote Ford County wildcat well located over nine miles from closest recognized oil production in the Jumbo abandoned pool (1953, Atoka Oil) in Gray County. The #1-27 Heyen Trust was drilled to a total depth of 5,405 ft at site in approximately SE NW SE NW in section 27- T28s- R 26W, about four miles south and eight miles east of Ensign, Kansas. Completion details remain confidential. The well was placed on pump on January 14, 2022. The new oil field has been named the Concord field. (ref: API 15-057-21062)
2. ARP Operating, LLC, Denver, CO., is producing 20 BOPD from the lower Lansing-Kansas City and Cherokee (Johnson Zone) formations at a new pool discovery in Thomas County. The #1 Los Primos was drilled to a total depth of 4,770 ft in approximately NW NW SE of section 26- T10s- R33W. It was placed on the pump on January 17, 2022. Drill site is located over one mile north of active production in the Saline South Fork pool (2008), which has produced over 50,000 BO from Basal Cherokee Sand and Johnson Zone. The newly named Cousins field lies about three miles north and one and one-half miles east of Monument, Kansas. (ref: API 15-193-21093)
3. Murfin Drilling Company, Inc., Wichita, KS., has successfully completed the #1-10 H & H Unit for an undisclosed amount of crude oil being produced from the Mississippian Saint Louis formation in Finney County. The wildcat well was drilled in approximately NW NE SE NE in section 10- T22s- R31W, about twelve miles north and eight miles east of Garden City, Kansas. Total depth was stopped at 5,000 ft. Closest production in the area resides over two miles away in the Sonderegger oil field, which produced oil from the Mississippian Saint Genevieve formation. The new pool discovery has been tentatively named the H & H oil field. (ref: API 15-055-22543)
4. Downing-Nelson Oil Company, Inc., Hays, KS., has recently established two new oil fields in Rawlins County, northwest Kansas. The new fields are both producing crude oil from the Cherokee Sand formation. This makes five discoveries for Downing-Nelson in the county since exploration began in 2014. The new finds are located about eleven to twelve miles south of McDonald, Kansas. Completion details remain confidential.
 First, the #1-19 Bucker has been completed on pump in approximately SW SE NW NE in section 19- T5s-

R36W. The well was drilled to a total depth of 4,880 ft. Closest known production to the discovery lies over three-quarters mile to the west in the Cheyenne Ridge oil field, which Downing-Nelson also established in 2020. Their #1-24 Fleming was completed for 40 BOPD from Cherokee perforations at 4660-4666 ft in the NE/4 of section 24- T5s - R37W. The new Buckner discovery has tentatively been named Cheyenne Ridge East. (ref: API 15-153-21273)

In section 17- T5s- R36W, Downing-Nelson's #1-17 Charlene has established the newly recognized Charlene oil field over one mile southwest of oil production in the K - S oil field in Rawlins County. Discovery site is located approximately W/2 NE NW SW of section 17. Total depth was obtained at 4,948 ft. The K - S field was also opened by Downing-Nelson in 2021 with Cherokee pay. (re: API 15-153-21272)

5. Grand Mesa Operating Company, Wichita, KS., has discovered Mississippian oil reserves nearly three-quarters mile northwest of known production in the Trembley Northeast oil field (1993, Mississippian). The new find is located on the #1-22 Sorenson Lease, approximately NW SE NE SW in section 22- T24s- R8W, about one and one-half miles southeast of the town of Abbyville, Kansas. The well was drilled to a total depth of 4,110 ft by Murfin Drilling tools. Completion details are confidential. The new oil field has been named Sorenson. (re: API 15-155-21786)

6. Black Oak Exploration, LLC, Denver, Co., has a new Lansing - Kansas City oil discovery at the #1-16 Steckel Trust, located in approximately SW SW SE NW in section 16- T12s- R14W, in Russell County. The McBroom North pool opener found reserves nearly three-quarters mile east of known LKC oil production in the Mellard East field, which was established by Rains & Williamson Oil Company in 1983. The field has produced over 129,000 bbls of oil to date. Discovery Drilling tools drilled the #1-16 Steckel Trust to a total depth of 3,365 ft. Well details remain confidential. Field area lies seven miles north and one mile east of Russell, Kansas. (ref: API 15-167-24110)

7. Raydon Exploration, Inc., Oklahoma City, OK., has discovered Morrow oil reserves in the active Seven Mile oil field (2014), where the previous pay zone was Mississippian formation. The #1-6 Fansher Farms, spotted in approximately NW SE SE SE in section 5- T23s- R32W, Finney County, is producing crude from both formations. Completion details are confidential. The well was drilled to a total depth of 5,110 ft by Duke Drilling tools. Well site is situated about six miles north of Garden City, Kansas and lies nearly two miles from other Morrow production in the Congdon Northeast field in section 16. (ref: API 15-055-22542)

8. Murfin Drilling Company, Inc., Wichita, KS., has established the H & H oil field in Finney County, southwest Kansas. The #1-10 H & H Unit, spotted in approximately NW NE SE NE in section 10- T22s- R31W, is producing crude oil from the Mississippian Saint Louis formation, nearly two miles northeast of recognized Mississippian oil production in the Sonderegger field (1952). The well was drilled to a total depth of 5,000 ft. Completion details are confidential. The new discovery is situated about twelve miles north and eight miles east of Garden City, Kansas. (ref: API 15-055-22543)

9. Black Oak Exploration, LLC, Denver, Co., is producing new oil Lansing - Kansas City reserves discovered at the #1-4 Argabright, located in approximately SE NW NW SE in section 4- T3s- R34W, in Decatur County. The wildcat well lies over five and one-half miles southeast of known LKC oil production in the Kopriva oil field (1991) and is about one mile west of the town of Blakeman, Kansas. Completion details are confidential. Murfin Drilling tools drilled the well to a total depth of 4,540 ft. The new oil field has been named Longhorn Creek. (ref: API 15-153-21271)

10. Mull Drilling Company, Inc., Wichita, KS., has discovered new oil reserves in the Simpson Sand formation at the #1-31 Peterson Trust in Lyon County. The wildcat well establishes the new Rainbow Ridge Northwest field, about two miles south and five miles west of Bushong, Kansas. Operator drilled the well in approximately SE SW NE SW in section 31- T16s- R10E and is nearly one mile northwest of known production in the Rainbow Ridge field. Lighthouse Drilling bottomed the well at a total depth of 3,200. Completion details are confidential. The Rainbow Ridge field was discovered by John O. Farmer, Inc. in 2018 with the completion of the #1 Finney, NE/4, section 6- T17s- R10E, for 22 BOPD from the Viola formation. (ref: API 15-111-20553)

CHANGE SERVICE REQUESTED

KGS BULLETIN
 March - April 2022

March 2022

Sun	Mon	Tue	Wed	Thu	Fri	Sat
		1	2	3	4	5
6	7	8 KGS Board	9 Tech Meeting	10	11	12
13	14	15	16 KGF Board	17	18	19
20	21	22	23 Tech Meeting	24	25	26
27	28	29	30	31		

April 2022

Sun	Mon	Tue	Wed	Thu	Fri	Sat
					1	2
3	4	5	6	7	8	9
10	11	12 KGS Board	13 Tech Meeting	14	15	16
17	18	19	20 KGF Board	21	22	23
24	25	26	27 Tech Meeting	28	29	30